



Audubon

Randall Davey
Audubon Center
and Sanctuary

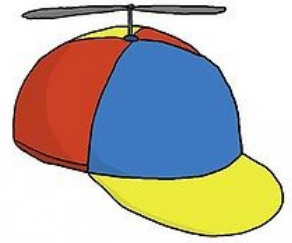
Audubon Summer Adventure Camp 2020 SURVIVAL GUIDE



We can't wait to see you at our 2020 Summer Adventure Camps!
The following information is being provided to answer many of the questions you may have in preparing your child for camp. Please take a look and if you have any additional questions about camp, please feel free to contact us at sally.maxwell@audubon.org or 505-983-4609 x21.

Dressing for Camp:

- Hats, sturdy comfortable shoes (**no open-toed shoes, please**), sunscreen, and a jacket or raincoat are required. Kids will be exploring, playing, and having fun outside so clothes and shoes that can get dirty are appropriate. If the conditions are right, we may play in the river. Bring clothes and shoes that are suitable for getting wet on Monday, and keep them in your cubby throughout the week.
- **We get messy**, so we recommend sending a change of clothes, just in case. This is especially true for our youngest campers.
- **PLEASE label everything:** the amount of clothing left over after summer camp is tremendous. We will do our very best to return lost and found items to you, but please assist us by placing your child's name clearly on lunchboxes, water bottles, clothing, and other items.



Toys:

- Unfortunately, toys from home can be distracting or can get lost. **Please** leave them at home or in the car. **Anything with an on/off switch will not be permitted at camp, with some limited exceptions for specific camp activities.**
- Campers will not be allowed in our Nature Store without parents, please leave money at home or with parents.

Snacks and Lunch:

- Children will need to bring their own morning **AND** afternoon snack, lunch and drink. Lunch will be a supervised, relaxing, half-hour break between the morning and afternoon activities.
- Audubon always encourages sustainability. All of our campers – as well as Audubon staff – are encouraged to bring reusable water bottles and “no waste” lunches. For tips on packing a waste-free lunch, visit: www.wastefreelunches.org.
 - A “no-waste lunch” actually costs less in the long-term and includes the following:
 - reusable containers
 - washable forks and spoons
 - reusable drink container
 - reusable lunch box

Note: Randall Davey Audubon Center & Sanctuary offers recycling and composting on site. Thank you for your cooperation and we look forward to minimizing our ecological footprint.



AUDUBON SUMMER ADVENTURE CAMP 2020

CAMP ITEMS CHECKLIST

BEFORE CAMP BEGINS:

Our medical and authorization forms are completed online now! Please sign in to your CampDoc account and complete your medical profile before camp begins.

- ☐ Completed Health Profile
- ☐ Completed Authorized Pick-Ups
- ☐ Completed Release of Liability & Use of Image
- ☐ A sense of adventure!!

DAILY CHECKLIST:

- ☐ Day pack (the items below should be able to fit into this backpack)
- ☐ Sun hat
- ☐ Sturdy, comfortable shoes appropriate for hiking and playing (*no open-toed shoes*)
- ☐ Sunscreen
- ☐ Jacket and/or raincoat
- ☐ Clothes that can get dirty
- ☐ Extra set of clothes...just in case!
- ☐ Water bottle
- ☐ Lunch
- ☐ Morning Snack and Afternoon Snack
- ☐ Water shoes (can be left in cubby)
- ☐ Medications, if necessary



REMEMBER: We ask that you label all of your child's items with his/her name to prevent mix-ups at the end of the day.

Camper Drop Off and Pick Up:

- **Please drive slowly on Upper Canyon Road at all times!** The posted speed limit is 25 miles per hour, but it is best to go slower! It is also important to note that we have a very small parking lot. Please be aware of this when you are dropping off and picking up your child. We are open to the public during these times.
- All camps are full-day sessions running from **9 AM to 3 PM**. Campers can be dropped off between 8:30 and 9AM, and picked up between 3 and 3:30PM. Please ensure that your child is dropped off and is picked up **ON TIME**. Our staff is busy setting up before camp and cleaning up after camp, so we appreciate your timely arrival.
- Before care is provided from **7:30 to 9AM** for a cost of \$15 per day. After care is provided from **3 to 5PM** for a cost of \$20. Please sign up for these services through our online registration system or with the camp director on the first day of each camp session.
- Campers will **automatically** be enrolled in after care if they are not picked up by 3:30PM and parents will be **charged the full aftercare rate of \$20**.
- Your child will only be released to adults that you have indicated on your authorized pick-ups form. If there is an emergency and you need to have another adult pick up your child, please call and let the camp director know at (505) 983-4609.

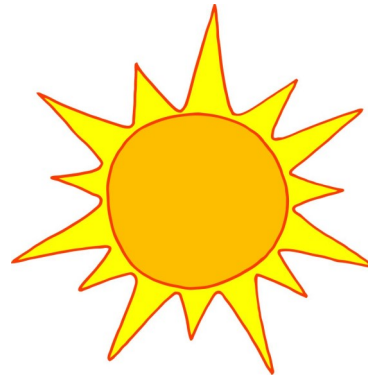
Communication with Camp Staff—we want to know!

- Because we get to spend a week, or longer, with your child, we have a great opportunity to get to know them. You are our best resource for getting to know your child. **Please share any information you would like with us to make this the best experience for you and your camper.**
- If it is a **special day** for your child, let us know. We love to celebrate birthdays!
- On the last day of each camp, we will ask campers, parents, and staff to evaluate their camp experience. **Your feedback is very important for us**, so that we can develop the best programs possible.
- If you have any questions or concerns regarding your child's camp experience please call us at (505) 983-4609 and ask to speak with the camp director.



Guidelines for Campers:

- There is an expectation for campers and staff to **treat one another and the natural world with respect and consideration**.
- Remember we are a **Sanctuary**. Please do not pick leaves off plants, or collect natural items (rocks, feathers, berries, etc.) to take home.
- In order to maintain an emotionally and physically safe environment for campers and staff, we **will not tolerate** hitting, fighting, bullying, inappropriate language, or straying from camp groups.
- Guidelines for behavior and safety will be reviewed with campers on the **first day** of each camp session.
- Audubon staff will guide campers by setting **positive, clear, consistent and fair** expectations. We will reinforce positive behaviors and attempt to redirect inappropriate behavior to more acceptable ones.
- If a child is having difficulty working within the group, the educator, parent, and child will **work together to solve the problem**.



Cancellation Policy:

- Cancellations made prior to **May 1st** receive full refunds, minus a \$50 processing fee
- Cancellations made after **May 1st**, but made at least **3 weeks prior** to your child's camp session receive a 50% refund
- **No refunds** will be given for cancellations within 3 weeks of your child's camp
- Please do not ask us to make any exceptions. We truly do understand that circumstances change, but, please remember we are a non-profit organization. We appreciate your understanding in this matter.

Transfer Policy:

Campers transferred from one camp session to another session (if space is available) will be charged a \$25 administrative fee.